

WHAT ORGANISATIONS ARE HERE?

Asker Healthcare AB
Assemblin AB
Avarn Security AB
Avarn Security AS
Avesta kommun
Billerud
Bliksund
Bluestep Bank AB
CBM Christoffel Blindenmission
CEJN AB
Cibes Lift Group
Clearbox Consulting
CTG
Cyclife Sweden AB
Derome AB
Digital Workplace Group
Electrolux AB
Eltel Networks AS
Etteplan Oyj
Exakta Group AB
Felleskjøpet Agri SA
Heimstaden Services AB
Hiwin
ICA

ICEpower a/s
IKEA Industry
Informationsteknik Scandinavia AB
iomer internet solutions inc.
IVL, Svenska Miljöinstitutet
Jazz Aviation
Kungsbacka kommun
Lejonfastigheter AB
Malmö stad
MAN Energy Solutions
Mekonomen Company
MQ Marqet AB
Mycronic AB
Swedish Agency for Accessible Media
Novo Nordisk Foundation
Nynas AB
Nynas NV
Odense Renovation A/S
ONE Nordic
Partille kommun
Pidpa
Polypeptide
Pulsen AB
Region Halland

RF Riksidrottsförbundet
RF-SISU Skåne
Rippler
Skövde kommun
Stadium
Statens väg- och transportforskningsinstitut
Steer
Stiesdal A/S
Studsvik AB
Swegon Group AB
SWEP International
Sydställningar i Sölvesborg AB
Sysav
Systemair AB
Teknikföretagen
The Swedish Club
Toyota Material Handling Europe AB
Transportstyrelsen
Tuleva AG
UCS IT Solutions Linköping AB
Vårdförbundet
Vedum Kök & Bad AB
VTI
Öckeröborg AB

WELCOME TO DAY TWO OF THE OMNIA CONFERENCE

OMNIA CONFERENCE | MALMÖ 14-15 NOV.

Presentations
will be shared

What is the common denominator
of successful intranets?

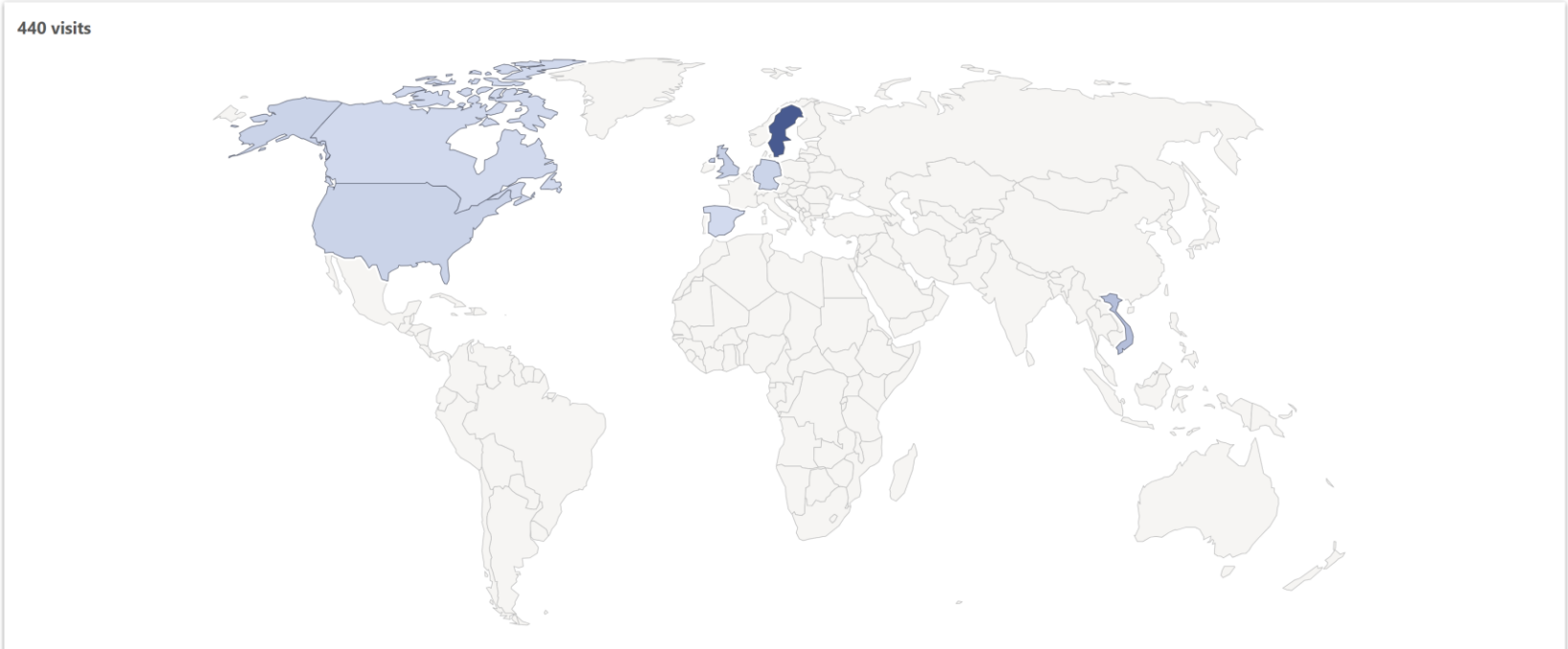
~~Lot's of features?~~

Governance Hub

- REALTIME
- USAGE**
- ROADBLOCKS
- PUBLISHING
- COMMUNITIES
- TEAMWORK
- SEARCH
- STATISTICS
- BEHAVIOR

Period: Month | Period date: This month | User Type: | Department: | Location:

- Map**
- Location
- Device
- Screen size
- Browser
- OS
- Over time



Governance Hub

- REALTIME
- USAGE**
- ROADBLOCKS
- PUBLISHING
- COMMUNITIES
- TEAMWORK
- SEARCH
- STATISTICS
- BEHAVIOR

Period: **Month** |
 Period date: **This month** |
 User Type: |
 Department: |
 Location:

- Map
- Location**
- Device
- Screen size
- Browser
- OS
- Over time

| COUNTRY | VISITS | ACTIONS | ACTIONS PER VISIT | AVG. TIME ON WEBSITE | BOUNCE RATE |
|----------------|------------|--------------|-------------------|----------------------|-------------|
| Sweden | 308 | 2,720 | 8.8 | 8 min 8s | 66% |
| Vietnam | 66 | 53 | 0.8 | 51s | 85% |
| United Kingdom | 27 | 141 | 5.2 | 5 min 32s | 56% |
| United States | 17 | 86 | 5.1 | 7 min 30s | 65% |
| Germany | 16 | 177 | 11.1 | 10 min 18s | 75% |
| Totals | 440 | 3,292 | 7.5 | 7 min 8s | 68% |

1-5 of 7 [Next >](#)

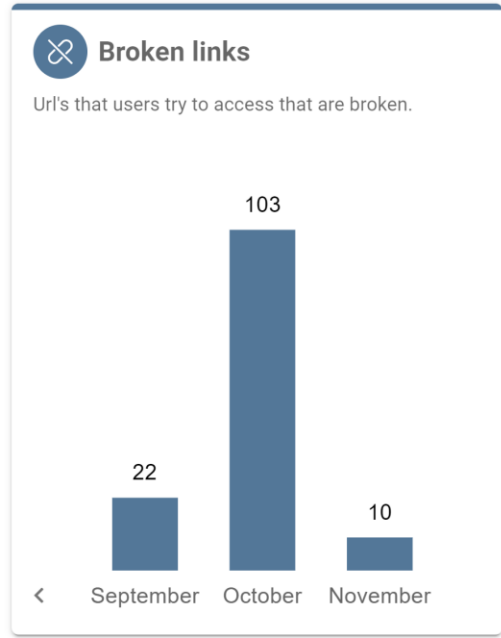
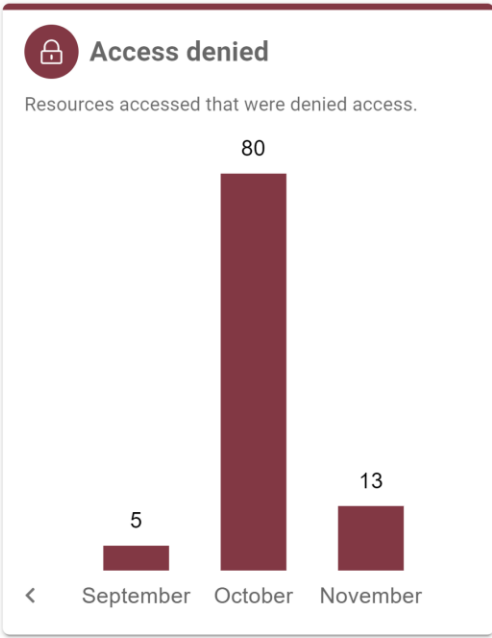


5



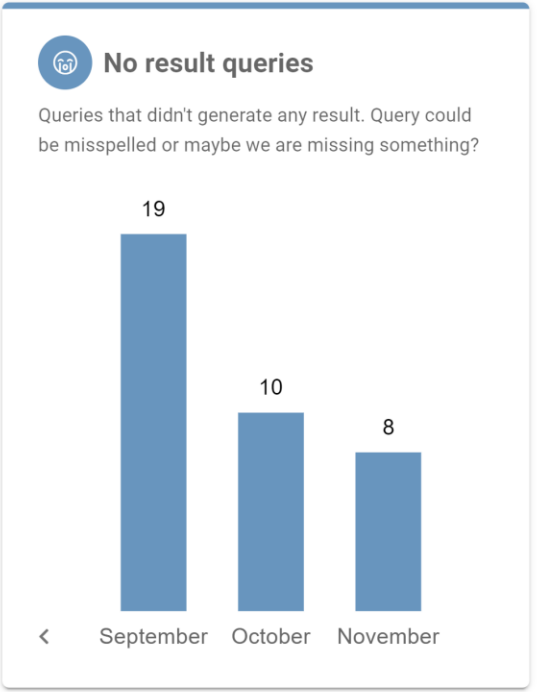
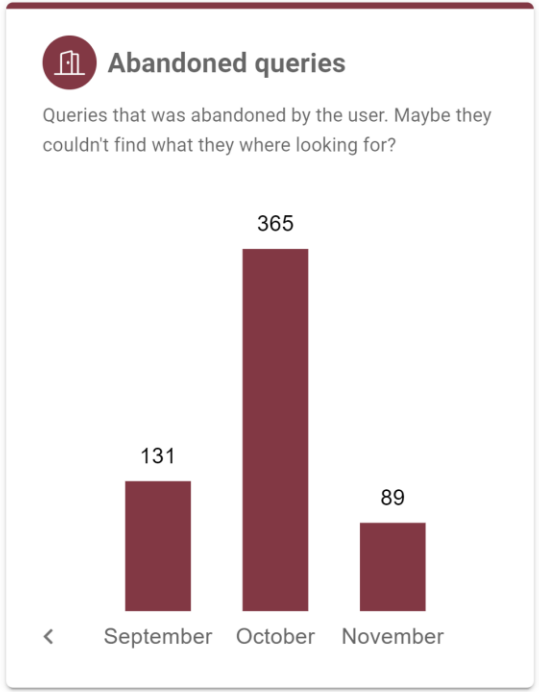
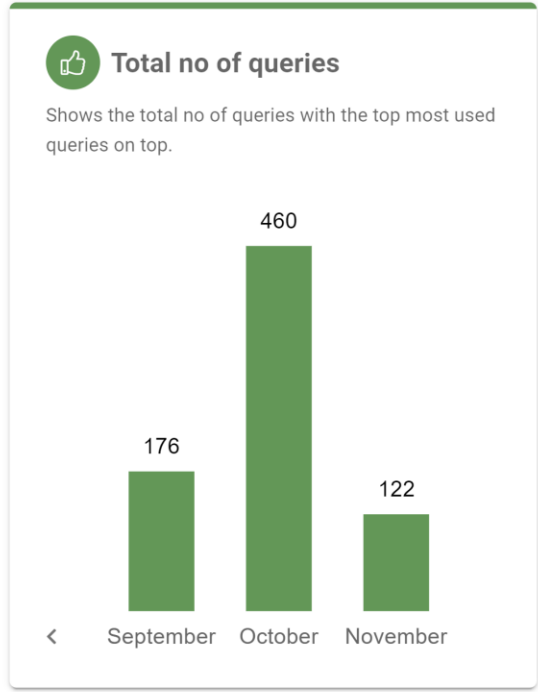
Governance Hub

- REALTIME
- USAGE
- ROADBLOCKS**
- PUBLISHING
- COMMUNITIES
- TEAMWORK
- SEARCH
- STATISTICS
- BEHAVIOR



Governance Hub

- REALTIME
- USAGE
- ROADBLOCKS
- PUBLISHING
- COMMUNITIES
- TEAMWORK
- SEARCH**
- STATISTICS
- BEHAVIOR



Governance Hub



REALTIME



USAGE



ROADBLOCKS



PUBLISHING



COMMUNITIES



TEAMWORK



SEARCH



STATISTICS



BEHAVIOR



Period
Month

Period date
This month

Action Type

Top 100 labels

Page URLs

/_/communities/start (69 pageviews)

From internal pages

alamedagroup.omniatestcloud.net/_/sales-community/start 15%

alamedagroup.omniatestcloud.net/_/mountain-bike-community/start 7.3%

alamedagroup.omniatestcloud.net/_/training/en/start 7.3%

alamedagroup.omniatestcloud.net/_/intelligence-agency/start 4.9%

alamedagroup.omniatestcloud.net/_/en-us/archive/spring-campaign 4.9%

Others 61%

From websites

/_/communities/start

69 pageviews

Incoming traffic

- 41 from internal pages
- 0 from internal searches
- 0 from search engines
- 0 from social networks
- 7 from websites
- 0 from campaigns
- 3 direct entries

Outgoing traffic

- 48 to internal pages
- 0 internal searches
- 0 downloads
- 5 outlinks
- 3 exits

To internal pages

alamedagroup.omniatestcloud.net/_/sales-community/start 46%

alamedagroup.omniatestcloud.net/_/mountain-bike-community/start 17%

alamedagroup.omniatestcloud.net/_/content-creators/start 4.2%

alamedagroup.omniatestcloud.net/_/editorial-hub/start 4.2%

alamedagroup.omniatestcloud.net/_/photography-digest/start 4.2%

Others 25%

Outlinks

1

GET MORE OUT OF OMNIA

QUICK SETUP OF THE GOVERNANCE HUB



2

GET MORE OUT OF OMNIA

FOUR ONLINE TRAINING SESSIONS IN THE NEW YEAR

A background of numerous black pushpins scattered across a light blue surface. The pushpins are oriented in various directions, creating a textured, grid-like pattern. A single blue circle containing the number '3' is positioned at the top center of the image.

3

GET MORE OUT OF OMNIA

REQUEST A STRATEGY AND PLANNING MEETING

09¹⁰

CASE STUDY

The Art of Simplicity: Intranet Development through Continuous Improvements

Minna Carlsson and Hannah Persson,
Cibes Lift Group

Venue: Öresund 1+2

BUSINESS ADVICE

Navigating the Microsoft 365 Roadmap and aligning with intranet market trends (repeated)

Jason Sirockman, Microsoft MVP,
Partner at Iomer Internet Solutions Inc.

Venue: Lund 1+2

CASE STUDY

Improve productivity and employee engagement from CEO to the frontline workforce

David Lindgren, Omnia Expert

Venue: Helsingborg 1+2

10⁰⁰

CASE STUDY

Managing 50.000 business document in Omnia – The challenges and benefits

Gabriel Buci, IKEA Industry

Venue: Öresund 1+2

PRODUCT TECH

Peace of mind as a service - customizing Omnia with managed extensions

Antti Koskela, Omnia Expert

Venue: Lund 1+2

PRODUCT COMMS

Using analytics for continuous improvement of internal communication

Jörgen Bjerkesjö, Omnia Expert

Venue: Helsingborg 1+2

10⁴⁵

PEER-TO-PEER

Coffee break

ADVICE

Ask the Experts booth is open for your questions

Omnia Team

Venue: Öresund 3

MINI-DEMO

Overview of features that drive user engagement

Per Ljungberg and Peter Dietrich, Omnia
Business Development

Venue: Öresund 3

ANY QUESTIONS?

omnia

HOW TO KEEP TRACK?



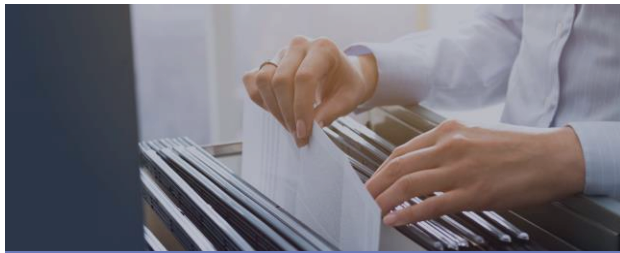
OMNIA UPDATE



OMNIA NEWSLETTER



USER COMMUNITY (YAMMER)



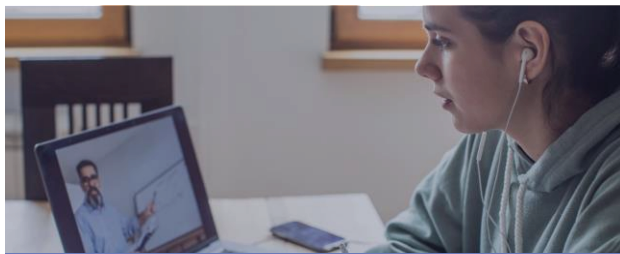
PRODUCT DOCUMENTATION



RELEASE NOTES



IN DEVELOPMENT



ON-DEMAND WEBINARS



BEST PRACTICE VIDEOS

**CLICK THE LINKS
TO LEARN MORE**